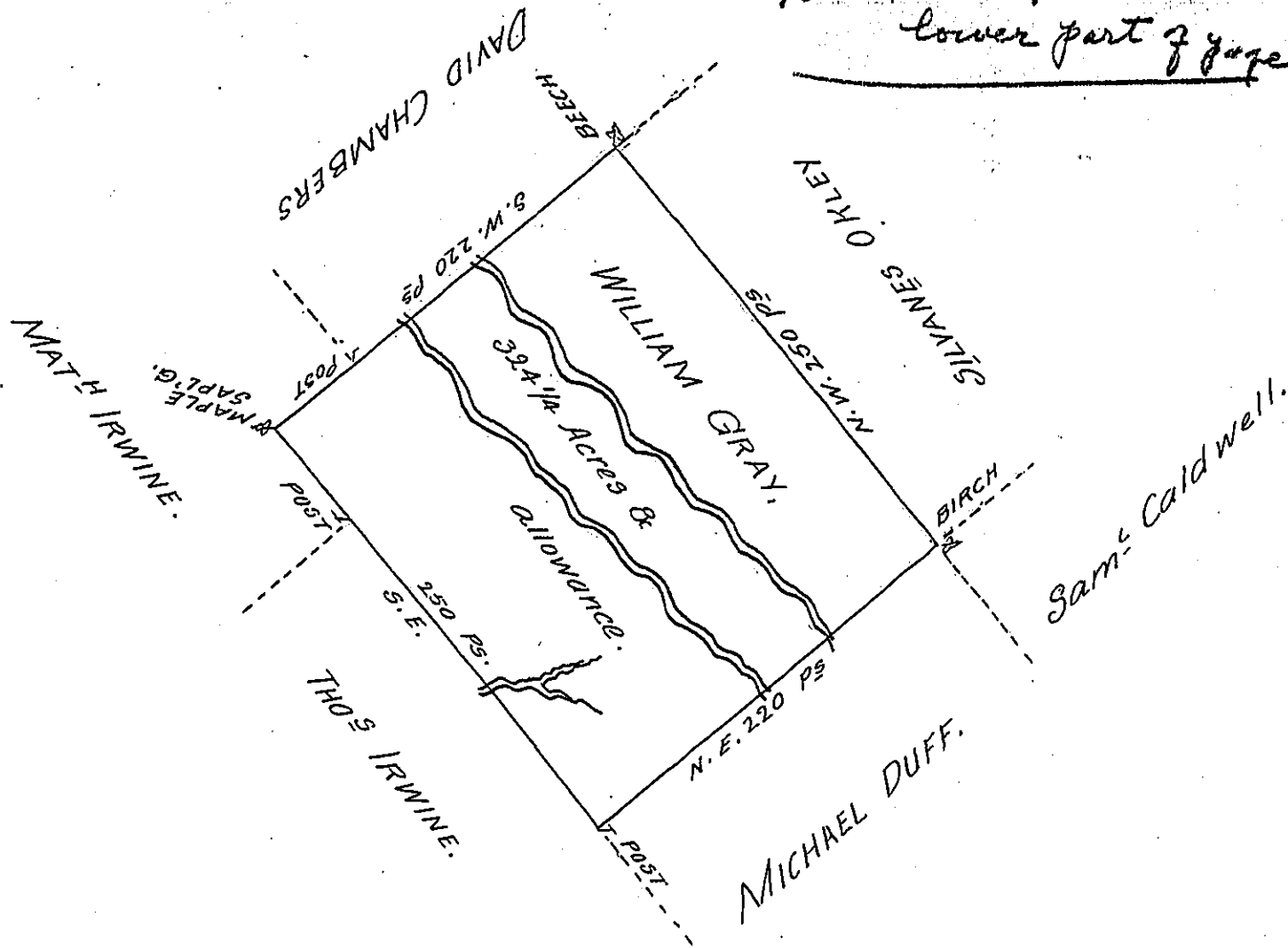


Patent - P-1-391
lower part of page

100



A Draught of a Tract of Land Called — Situate on some small Branches of Tunkhannock Creek adjoining Lands survey'd for Michael Duff in the County of Northumberland Containing Three hundred and Twenty four Acres & 1/4 of an Acre besides the usual allowance of 6 P^r Cent for Roads & C^o: Survey'd for William Gray the Eight day of May 1775 in pursuance of a warrant dated the 20th day of February 1775.

Chas Stewart Dep^y Sur^r

To John Lukens Esq^r
Surv^r Gen^l

IN TESTIMONY that the above is a copy of the original remaining on file in the Department of Internal Affairs of Pennsylvania, made conformably to an Act of Assembly approved the 16th day of February, 1833, I have hereunto set my Hand and caused the Seal of said Department to be affixed at Harrisburg, this fourteenth day of November 1905

James R. Parsons
Secretary of Internal Affairs.